

## The Hospital World.

### THE LEICESTER INFIRMARY NURSES' HOME.

The opening of the new Nurses' Home at the Leicester Infirmary on Tuesday last by Mrs. T. Fielding Johnson marks a red letter day in the history of the Infirmary, and the nurses of this splendid institution will now have a Home second to none. Some idea of its extent and proportions will be gathered from the illustration which we have pleasure in publishing on this page. The Home has a long frontage facing south, and running back from this main building, east and west, are three blocks, the centre one of which is a large recreation hall and lecture room, a most valuable and necessary addition to a nurses' training school. The left-hand block, as one faces the main entrance contains the library, several bedrooms, and an isolation room; the right-hand one the housemaids' sitting-room and various domestic offices. On either side of the hall in the main building are spacious sitting rooms for nurses and probationers, the Home Matron, and the Sisters' sitting-rooms, a "quiet" room, linen room, and kitchen. All of these open into the main corridor, which is connected through the hall with a vestibule with glass roof and corridors similarly glazed, which will form a kind of winter garden. The majority of the bedrooms on the floors above occupy the long frontage facing south, and open into the long corridor. The aspect is thus pleasant and sunny, and each room has a fireplace.

The Home, which is conveniently arranged, and on the furnishing of which much thought and trouble has evidently been expended, so that it may be a real home to the nursing and domestic staff, was designed by Messrs. Everard, Son, and Pick, of Leicester, to whom

great credit is due. The cost, including the furniture, is over £22,000, and its completion brings the provision for the nursing staff of the Infirmary to a level with the very high standard of efficiency and comfort for which the Infirmary itself is renowned.

The Home is Georgian in character. Much attention has also been paid to the employment of materials of a fire-resisting nature, and all the floors are of concrete. In the corridors they are finished with terrazzo, and in the sitting-rooms and bedrooms "Stonwod," a seamless material, which is found satisfactory in use, is employed. Great attention has been paid in constructing the building, to avoid oc-

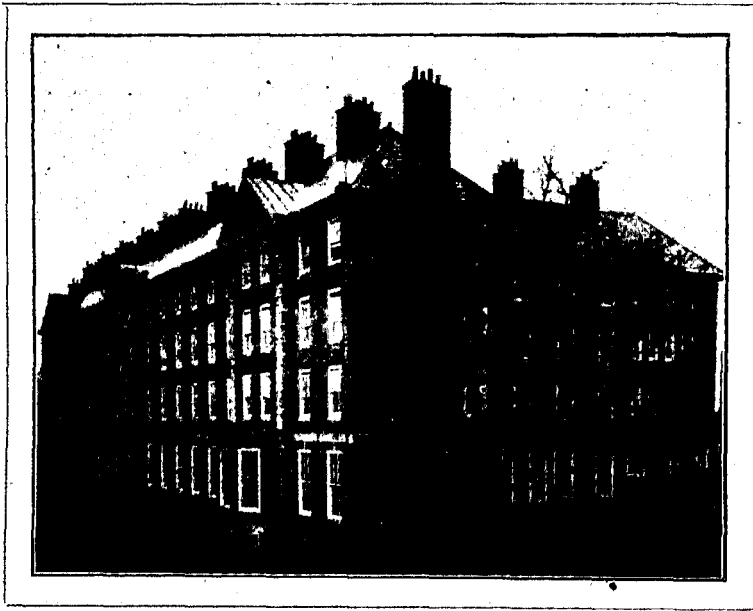
casional for unnecessary cleaning. The Home will be heated by steam, so that it is anticipated the bedroom fireplaces will be used principally as a means of ventilation, although in case of sickness they may be useful.

It will be remembered that the memorial stone of the building was laid by the Matron, Miss G.

A. Rogers, who has done so much for the Infirmary, and for the nurses trained in the Nursing School connected with it, during the twenty-six years in which she has held this position. This stone is in a prominent place over the garden entrance in the centre of the main front elevation, and will serve to remind succeeding generations of probationers how much the nurses of the Leicester Infirmary owe to the Matron under whose supervision the School attained a reputation second to none.

Associated with Miss Rogers is a most efficient staff of Sisters, who loyally and ably aid her in maintaining efficiency.

The opening of the Home took place at 3.30 p.m., but previously at 12.30 another interesting ceremony had taken place, namely, the presentation of Badges to the members of the Territorial Force Nursing Service.



The Nurses' Home, Leicester Infirmary.

[previous page](#)

[next page](#)